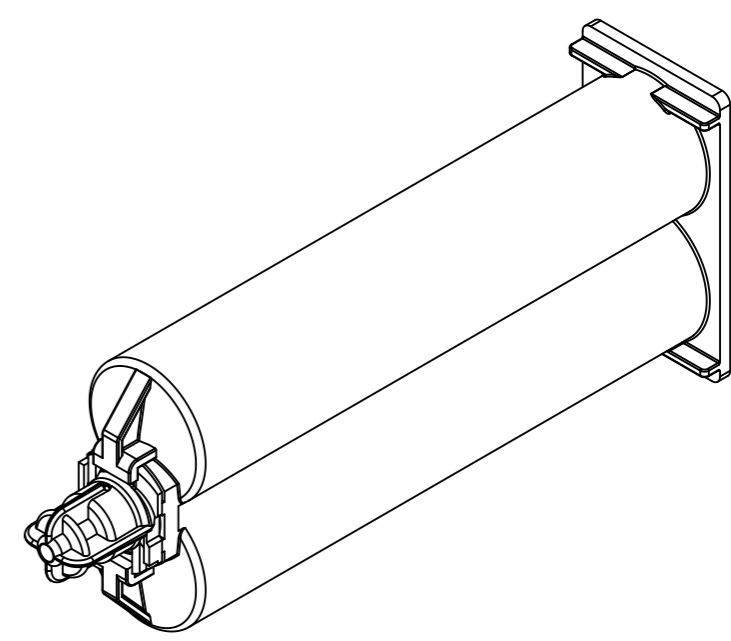
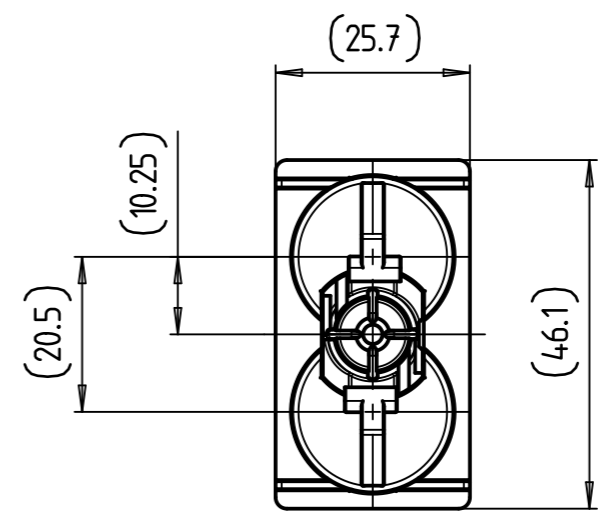
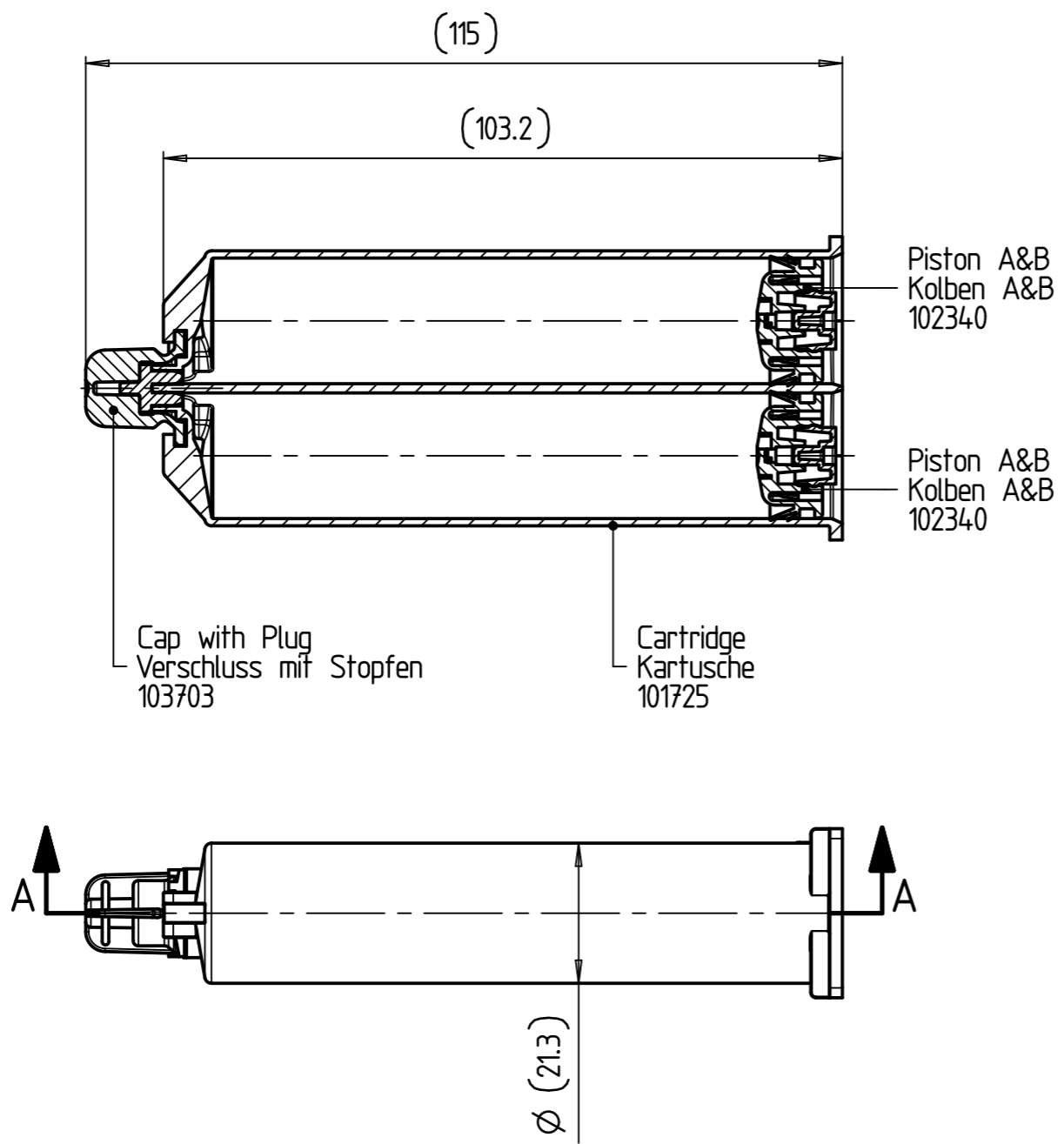


General Tolerances	Plastic parts	Nominal size above until	0	1	3	6	10	15	22	30	40	53	70	90	120	160	200	250	315	400	
		Tolerance	± 0.10	± 0.11	± 0.12	± 0.14	± 0.17	± 0.20	± 0.24	± 0.28	± 0.33	± 0.40	± 0.50	± 0.60	± 0.75	± 0.95	± 1.15	± 1.45	± 1.80	± 2.50	± 3.15
Form tolerances: Surface area principle	Position tolerance: individual definition	Linear dimension	0	1	3	6	10	15	22	30	40	53	70	90	120	160	200	250	315	400	
		Radius, chamfer	0	3	6	10	15	22	30	40	53	70	90	120	160	200	250	315	400	± 0°30'	± 0°20'
		Angle (nominal dimensions=short side)	0	10	30	45	60	75	90	105	120	135	150	165	180	± P	± 1.00	± 0.50	± 0.20	± 0.10	± 0°10'

Schnitt A-A



Description: Set 50, 1:1, PP white Set 50, 1:1, PP weiss	uncontrolled copy when printed		Designed	22.08.2012	RLA
	Size	Scale	Sulzer-ID		Layout
	A3	1:1	110353		A
	ISO "E"	Article			Revision
		AA 050-01-10-01			00

Copyright © by Sulzer Mixpac AG. The content of this document is and remains the intellectual property of Sulzer Mixpac AG. It is submitted to the recipient without granting any license. It shall not be copied, reproduced or duplicated wholly or partly or made available to third parties without the previous written permission of Sulzer Mixpac AG.